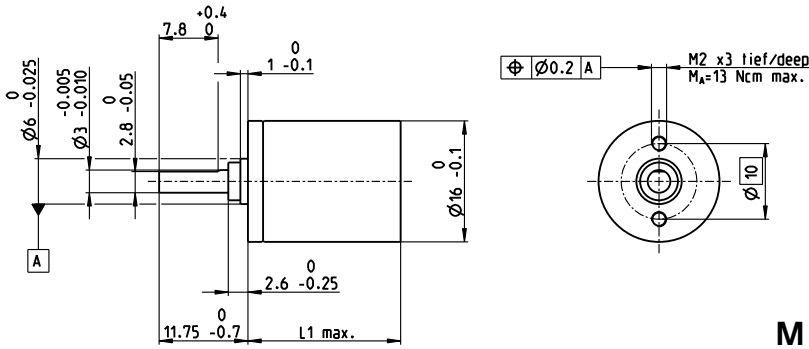


Planetary Gearhead GP 16 A $\varnothing 16$ mm, 0.1–0.3 Nm

gear



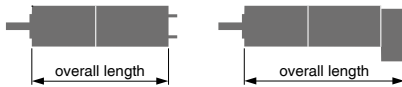
M 1:1

Technical Data	
Planetary Gearhead	straight teeth
Output shaft	stainless steel, hardened
Bearing at output	sleeve bearing
Radial play, 6 mm from flange	max. 0.06 mm
Axial play	0.02–0.10 mm
Max. axial load (dynamic)	8 N
Max. force for press fits	100 N
Direction of rotation, drive to output	=
Max. continuous input speed	8000 rpm
Recommended temperature range	-30...+100°C
Extended range as option	-40...+100°C
Number of stages	1 2 3 4 5
Max. radial load, 6 mm from flange	8 N 12 N 16 N 20 N 20 N

- Stock program
- Standard program
- Special program (on request)

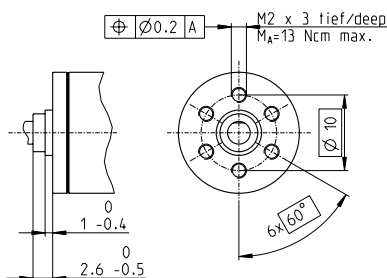
Gearhead Data	Part Numbers							
	110321	110322	110323	118186	110324	134782	110325	134785

1 Reduction	4.4:1	19:1	84:1	157:1	370:1	690:1	1621:1	3027:1	
2 Absolute reduction	$\frac{57}{13}$	$\frac{3249}{169}$	$\frac{185193}{2197}$	$\frac{19683}{125}$	$\frac{10556001}{28561}$	$\frac{1121931}{1625}$	$\frac{601692057}{371293}$	$\frac{63950067}{21125}$	
3 Max. motor shaft diameter	mm 2	2	2	1.5	2	2	2	2	
Part Numbers									
1 Reduction	5.4:1	24:1	104:1		455:1	850:1	1996:1	3728:1	
2 Absolute reduction	$\frac{27}{5}$	$\frac{1539}{65}$	$\frac{87723}{645}$		$\frac{5000211}{10985}$	$\frac{531443}{625}$	$\frac{285012027}{142805}$	$\frac{30292137}{8125}$	
3 Max. motor shaft diameter	mm 1.5	2	2		2	1.5	2	2	
Part Numbers									
1 Reduction		29:1	128:1		561:1		2458:1	4592:1	
2 Absolute reduction		$\frac{729}{25}$	$\frac{41553}{325}$		$\frac{2368521}{4225}$		$\frac{135005697}{54925}$	$\frac{14348907}{3125}$	
3 Max. motor shaft diameter	mm	1.5	2		2	2	2	1.5	
4 Number of stages		1	2	3	3	4	4	5	
5 Max. continuous torque	Nm	0.10	0.15	0.20	0.20	0.25	0.25	0.30	
6 Max. intermittent torque at gear output	Nm	0.150	0.225	0.300	0.300	0.375	0.375	0.450	
7 Max. efficiency	%	90	81	73	73	65	65	59	
8 Weight	g	20	23	27	27	31	31	35	
9 Average backlash no load	°	1.4	1.6	2.0	2.0	2.4	2.4	3.0	
10 Mass inertia	gcm ²	0.07	0.05	0.05	0.04	0.05	0.05	0.05	
11 Gearhead length L1	mm	15.5	19.1	22.7	22.7	26.3	26.3	29.9	



maxon Modular System											
+ Motor	Page	+ Sensor/Brake	Page	Overall length [mm] = Motor length + gearhead length + (sensor/brake) + assembly parts							
RE 16, 2 W	139			37.9	41.5	45.1	45.1	48.7	48.7	52.3	52.3
RE 16, 2 W	139	MR	475/476	43.6	47.2	50.8	50.8	54.4	54.4	58.0	58.0
RE 16, 3.2 W	140/141			56.0	59.6	63.2	63.2	66.8	66.8	70.4	70.4
RE 16, 3.2 W	141	MR	475/476	61.0	64.6	68.2	68.2	71.8	71.8	75.4	75.4
RE 16, 4.5 W	142/143			59.0	62.6	66.2	66.2	69.8	69.8	73.4	73.4
RE 16, 4.5 W	143	MR	475/476	64.0	67.6	71.2	71.2	74.8	74.8	78.4	78.4
A-max 16	159-162			41.0	44.6	48.2	48.2	51.8	51.8	55.4	55.4
A-max 16	160/162	MR	475/476	46.0	49.6	53.2	53.2	56.8	56.8	60.4	60.4
EC-max 16, 5 W	245			39.6	43.2	46.8	46.8	50.4	50.4	54.0	54.0
EC-max 16, 5 W	245	MR	477	46.9	50.5	54.1	54.1	57.7	57.7	61.3	61.3
EC-max 16, 2-wire	246			49.1	52.7	56.3	56.3	59.9	59.9	63.5	63.5
EC-max 16, 8 W	247			51.6	55.2	58.8	58.8	62.4	62.4	66.0	66.0
EC-max 16, 8 W	247	MR	477	58.9	62.5	66.1	66.1	69.7	69.7	73.3	73.3

Option Ball Bearing	Part Numbers			Technical Data	
---------------------	--------------	--	--	----------------	--



4.4:1	138333	455:1	138343	Planetary Gearhead	straight teeth
5.4:1	138334	561:1	138344	Output shaft	stainless steel, hardened
19:1	138335	690:1	138345	Bearing at output	preloaded ball bearings
24:1	138336	850:1	138346	Radial play, 6 mm from flange	max. 0.08 mm
29:1	138337	1621:1	138347	Axial play at axial load	< 4 N 0 mm
84:1	138338	1996:1	138348		> 4 N max. 0.05 mm
104:1	138339	2458:1	138349	Max. axial load (dynamic)	8 N
128:1	138340	3027:1	138350	Max. force for press fits	25 N
157:1	138341	3728:1	138351	Direction of rotation, drive to output	=
370:1	138342	4592:1	138352	Max. continuous input speed	8000 rpm
				Recommended temperature range	-40...+100°C
				Number of stages	1 2 3 4 5
				Max. radial load, 6 mm from flange	10 N 15 N 20 N 20 N 20 N
				Gearhead values according to sleeve bearing version	