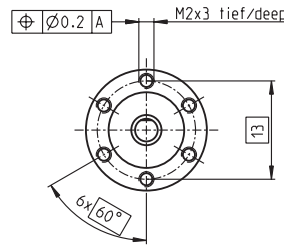
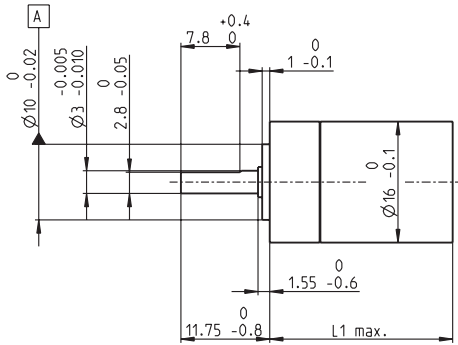


Planetary Gearhead GP 16 M $\varnothing 16$ mm, 0.1–0.3 Nm

Sterilizable



M 1:1

Technical Data

Planetary Gearhead	straight teeth
Output shaft	stainless steel, hardened
Bearing at output	preloaded ball bearings
Radial play, 6 mm from flange	max. 0.08 mm
Axial play at axial load	< 4 N 0 mm > 4 N max. 0.05 mm
Max. axial load (dynamic)	50 N
Max. force for press fits	100 N
Direction of rotation, drive to output	=
Max. continuous input speed	8000 rpm
Recommended temperature range	0...+80°C
Number of stages	1 2 3 4 5
Max. radial load, 6 mm from flange	10 N 15 N 20 N 20 N 20 N

maxon gear

- Stock program
- Standard program
- Special program (on request)


Part Numbers

	312908	312910	312913	312916	312917	312920	312922	312925
Gearhead Data								
1 Reduction	4.4:1	19:1	84:1	157:1	370:1	690:1	1621:1	3027:1
2 Absolute reduction	57/13	3249/169	185193/2197	19683/125	10556001/28561	1121931/1625	601692057/371293	63950067/21125
3 Max. motor shaft diameter mm	2	2	2	1.5	2	2	2	2
Part Numbers	312909	312911	312914		312918	312921	312923	312926
1 Reduction	5.4:1	24:1	104:1		455:1	850:1	1996:1	3728:1
2 Absolute reduction	27/5	1539/65	87723/845		5000211/10985	531441/625	285012027/142805	30292137/8125
3 Max. motor shaft diameter mm	1.5	2	2		2	1.5	2	2
Part Numbers		312912	312915		312919		312924	312927
1 Reduction		29:1	128:1		561:1		2458:1	4592:1
2 Absolute reduction		729/25	41553/325		2368521/4225		135005697/54925	14348907/3125
3 Max. motor shaft diameter mm		1.5	2		2		2	1.5
4 Number of stages	1	2	3	3	4	4	5	5
5 Max. continuous torque Nm	0.10	0.15	0.20	0.20	0.25	0.25	0.30	0.30
6 Max. intermittent torque at gear output Nm	0.150	0.225	0.300	0.300	0.375	0.375	0.450	0.450
7 Max. efficiency %	90	81	73	73	65	65	59	59
8 Weight g	25	28	32	32	36	36	41	41
9 Average backlash no load °	1.4	1.6	2.0	2.0	2.4	2.4	3.0	3.0
10 Mass inertia gcm ²	0.07	0.05	0.05	0.04	0.05	0.05	0.05	0.05
11 Gearhead length L1 mm	20.6	24.2	27.8	27.8	31.4	31.4	35.0	35.0



maxon Modular System

+ Motor	Page	+ Sensor/Brake	Page	Overall length [mm] = Motor length + gearhead length + (sensor/brake) + assembly parts
EC 16, 30 W, ster.	201			60.6 64.2 67.8 67.8 71.4 71.4 75.0 75.0
EC 16, 60 W, ster.	203			76.6 80.2 83.8 83.8 87.4 87.4 91.0 91.0

Application	Sterilization information
 Sterilizable Devices	Without shaft seal: typically 1000 autoclave cycles
Saws	Sterilization with steam
Surgical Reamers	Temperature 134°C ± 4°C
Arthroscopic Shavers	Compression pressure up to 2.3 bar
Surgical Staplers	Rel. humidity 100%
Dental Tools	Cycle length 18 minutes