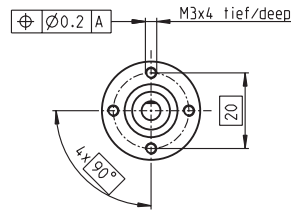
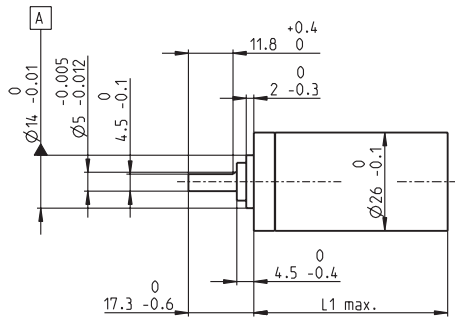


# Planetary Gearhead GP 26 B $\varnothing 26$ mm, 0.5–2.0 Nm

Ceramic Version

**NRND** See page 13  
Not recommended for New Design



M 1:2

### Technical Data

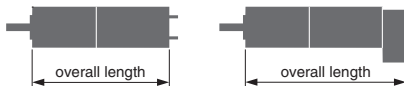
Planetary Gearhead	straight teeth
Output shaft	stainless steel, hardened
Bearing at output	ball bearing
Radial play, 10 mm from flange	max. 0.08 mm
Axial play at axial load	< 4 N 0 mm > 4 N max. 0.05 mm
Max. permissible axial load	100 N
Max. permissible force for press fits	100 N
Sense of rotation, drive to output	=
Recommended input speed	< 8000 rpm
Recommended temperature range	-40...+100°C
Number of stages	1 2 3 4 5
Max. radial load, 10 mm from flange	60 N 90 N 100 N 100 N 100 N

- Stock program
- Standard program
- Special program (on request)

### Part Numbers

Gearhead Data	144026	144029	144035	144041	144045	144051	144057	144059	144066	144072	144078
1 Reduction	3.8:1	14:1	53:1	104:1	198:1	370:1	590:1	742:1	1386:1	1996:1	3189:1
2 Reduction absolute	<sup>15</sup> / <sub>4</sub>	<sup>225</sup> / <sub>16</sub>	<sup>3375</sup> / <sub>64</sub>	<sup>87723</sup> / <sub>845</sub>	<sup>50625</sup> / <sub>256</sub>	<sup>29198</sup> / <sub>79</sub>	<sup>59049</sup> / <sub>100</sub>	<sup>759375</sup> / <sub>1024</sub>	<sup>158340015</sup> / <sub>114244</sub>	<sup>265012027</sup> / <sub>142805</sub>	<sup>1594323</sup> / <sub>500</sub>
3 Max. motor shaft diameter	mm 4	4	4	3.2	4	3.2	4	4	3.2	3.2	4
<b>Part Numbers</b>	144027	144030	144036	144042	144046	144052	144058	144061	144067	144073	144079
1 Reduction	4.4:1	16:1	62:1	109:1	231:1	389:1	690:1	867:1	1460:1	2102:1	3728:1
2 Reduction absolute	<sup>57</sup> / <sub>13</sub>	<sup>855</sup> / <sub>52</sub>	<sup>12825</sup> / <sub>208</sub>	<sup>2187</sup> / <sub>20</sub>	<sup>192375</sup> / <sub>832</sub>	<sup>263169</sup> / <sub>676</sub>	<sup>1121931</sup> / <sub>1625</sub>	<sup>2885625</sup> / <sub>3328</sub>	<sup>3947535</sup> / <sub>2704</sub>	<sup>7105563</sup> / <sub>3380</sub>	<sup>30292137</sup> / <sub>8125</sub>
3 Max. motor shaft diameter	mm 3.2	3.2	3.2	4	3.2	3.2	3.2	3.2	3.2	3.2	3.2
<b>Part Numbers</b>	144028	144031	144037	144043	144047	144053	144060	144062	144068	144074	144080
1 Reduction	5.4:1	19:1	72:1	128:1	270:1	410:1	850:1	1014:1	1538:1	2214:1	4592:1
2 Reduction absolute	<sup>27</sup> / <sub>5</sub>	<sup>3249</sup> / <sub>169</sub>	<sup>48735</sup> / <sub>676</sub>	<sup>41553</sup> / <sub>325</sub>	<sup>731025</sup> / <sub>2704</sub>	<sup>6561</sup> / <sub>16</sub>	<sup>531441</sup> / <sub>625</sub>	<sup>10965375</sup> / <sub>10816</sub>	<sup>98415</sup> / <sub>64</sub>	<sup>177147</sup> / <sub>60</sub>	<sup>14348907</sup> / <sub>3125</sub>
3 Max. motor shaft diameter	mm 2.5	3.2	3.2	3.2	3.2	4	2.5	3.2	4	4	2.5
<b>Part Numbers</b>		144032	144038	144044	144048	144054		144063	144069	144075	
1 Reduction		20:1	76:1	157:1	285:1	455:1		1068:1	1621:1	2458:1	
2 Reduction absolute		<sup>81</sup> / <sub>4</sub>	<sup>1215</sup> / <sub>16</sub>	<sup>19683</sup> / <sub>125</sub>	<sup>18225</sup> / <sub>64</sub>	<sup>1701938</sup> / <sub>3739</sub>		<sup>273375</sup> / <sub>256</sub>	<sup>601682057</sup> / <sub>371293</sub>	<sup>135005697</sup> / <sub>54925</sub>	
3 Max. motor shaft diameter	mm 4	4	2.5	4	3.2	4	3.2	4	3.2	4	3.2
<b>Part Numbers</b>		144033	144039		144049	144055		144064	144070	144076	
1 Reduction		24:1	84:1		316:1	479:1		1185:1	1707:1	2589:1	
2 Reduction absolute		<sup>1539</sup> / <sub>65</sub>	<sup>185193</sup> / <sub>2197</sub>		<sup>2777895</sup> / <sub>8788</sub>	<sup>124659</sup> / <sub>260</sub>		<sup>41668425</sup> / <sub>35152</sub>	<sup>15000633</sup> / <sub>8788</sub>	<sup>3365793</sup> / <sub>1300</sub>	
3 Max. motor shaft diameter	mm 3.2	3.2	3.2		3.2	3.2		3.2	3.2	3.2	
<b>Part Numbers</b>		144034	144040		144050	144056		144065	144071	144077	
1 Reduction		29:1	89:1		333:1	561:1		1249:1	1798:1	3027:1	
2 Reduction absolute		<sup>729</sup> / <sub>25</sub>	<sup>4617</sup> / <sub>52</sub>		<sup>69255</sup> / <sub>208</sub>	<sup>2368521</sup> / <sub>4225</sub>		<sup>1038825</sup> / <sub>832</sub>	<sup>373977</sup> / <sub>208</sub>	<sup>63950067</sup> / <sub>21125</sub>	
3 Max. motor shaft diameter	mm 2.5	3.2	3.2		3.2	3.2		3.2	3.2	3.2	
4 Number of stages	1	2	3	3	4	4	4	5	5	5	5
5 Max. continuous torque	Nm 0.5	0.6	1.3	1.3	1.8	1.8	1.8	2.0	2.0	2.0	2.0
6 Intermittently permissible torque at gear output	Nm 0.8	0.9	1.9	1.9	2.7	2.7	2.7	3.0	3.0	3.0	3.0
7 Max. efficiency	% 84	70	59	59	49	49	49	42	42	42	42
8 Weight	g 65	86	108	108	130	130	130	152	152	152	152
9 Average backlash no load	° 1.0	1.2	1.6	1.6	2.0	2.0	2.0	2.0	2.0	2.0	2.0
10 Mass inertia	gcm <sup>2</sup> 0.6	0.5	0.4	0.4	0.4	0.4	0.4	0.4	0.4	0.4	0.4
11 Gearhead length L1*	mm 29.2	36.0	42.8	42.8	49.6	49.6	49.6	56.4	56.4	56.4	56.4

\*for A-max 26 and RE-max 29 L1 is 2.2 mm



maxon Modular System												
+ Motor	Page	+ Sensor/Brake	Page	Overall length [mm] = Motor length + gearhead length + (sensor/brake) + assembly parts								
RE 25	99/101			83.8	90.6	97.4	97.4	104.2	104.2	111.0	111.0	111.0
RE 25	99/101	MR	302	94.8	101.6	108.4	108.4	115.2	115.2	122.0	122.0	122.0
RE 25	99/101	Enc 22	304	97.9	104.7	111.5	111.5	118.3	118.3	125.1	125.1	125.1
RE 25	99/101	HED_ 5540	305/307	104.6	111.4	118.2	118.2	125.0	125.0	131.8	131.8	131.8
RE 25	99/101	DCT22	315	106.1	112.9	119.7	119.7	126.5	126.5	133.3	133.3	133.3
RE 25, 20 W	100			72.3	79.1	85.9	85.9	92.7	92.7	99.5	99.5	99.5
RE 25, 20 W	100	MR	302	83.3	90.1	96.9	96.9	103.7	103.7	110.5	110.5	110.5
RE 25, 20 W	100	HED_ 5540	306/309	93.1	99.9	106.7	106.7	113.5	113.5	120.3	120.3	120.3
RE 25, 20 W	100	DCT22	315	94.6	101.4	108.2	108.2	115.0	115.0	121.8	121.8	121.8
RE 25, 20 W	100	AB 28	348	106.4	113.2	120.0	120.0	126.8	126.8	133.6	133.6	133.6
RE 25, 20 W	100	HED_ 5540 / AB 28	306/348	123.6	130.4	137.2	137.2	144.0	144.0	150.8	150.8	150.8
RE 25, 20 W	101	AB 28	346	117.9	124.7	131.5	131.5	138.3	138.3	145.1	145.1	145.1
RE 25, 20 W	101	HED_ 5540 / AB 28	307/348	135.1	141.9	148.7	148.7	155.5	155.5	162.3	162.3	162.3
A-max 26	125-132			71.8	78.6	85.4	85.4	92.2	92.2	99.0	99.0	99.0
A-max 26	126-132	MEnc 13	314	78.9	85.7	92.5	92.5	99.3	99.3	106.1	106.1	106.1
A-max 26	126-132	MR	302	80.6	87.4	94.2	94.2	101.0	101.0	107.8	107.8	107.8
A-max 26	126-132	Enc 22	304	86.2	93.0	99.8	99.8	106.6	106.6	113.4	113.4	113.4
A-max 26	126-132	HED_ 5540	306/307	90.2	97.0	103.8	103.8	110.6	110.6	117.4	117.4	117.4
RE-max 29	155-158			71.8	78.6	85.4	85.4	92.2	92.2	99.0	99.0	99.0
RE-max 29	156/158	MR	302	80.6	87.4	94.2	94.2	101.0	101.0	107.8	107.8	107.8