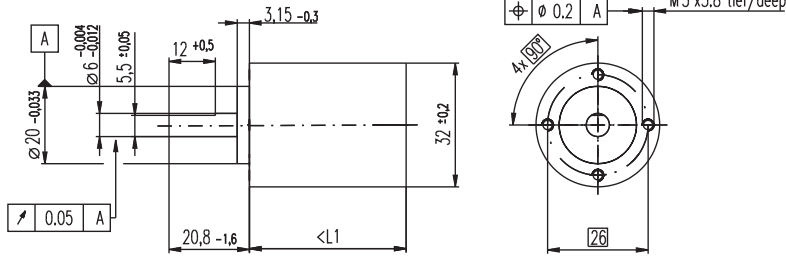


Planetary Gearhead GP 32 B $\varnothing 32$ mm, 0.75 - 4.5 Nm

NRND See page 13
Not recommended for New Design



M 1:2

Technical Data

Planetary Gearhead	straight teeth
Output shaft	stainless steel, hardened
Bearing at output	ball bearing
Radial play, 5 mm from flange	max. 0.1 mm
Axial play	max. 0.7 mm
Max. permissible axial load	120 N
Max. permissible force for press fits	120 N
Sense of rotation, drive to output	=
Recommended input speed	< 4000 rpm
Recommended temperature range	-40...+80°C
Number of stages	1 2 3
Max. radial load,	
12 mm from flange	70 N 140 N 210 N
Average backlash	
no load	< 1.0° < 1.2° < 1.4°

- Stock program
- Standard program
- Special program (on request)

Part Numbers

	338648	339182	338571	338581	339183	339184	338572	338573	338574
Gearhead Data									
1 Reduction	5.2 : 1	19 : 1	27 : 1	35 : 1	71 : 1	100 : 1	139 : 1	181 : 1	236 : 1
2 Reduction absolute	$\frac{57}{11}$	$\frac{3591}{187}$	$\frac{3249}{121}$	$\frac{1539}{44}$	$\frac{226233}{3179}$	$\frac{204687}{2057}$	$\frac{185193}{1331}$	$\frac{87723}{484}$	$\frac{41553}{176}$
3 Max. motor shaft diameter	mm 3	3	3	3	3	3	3	3	3
4 Number of stages	1	2	2	2	3	3	3	3	3
5 Max. continuous torque	Nm 0.75	2.25	2.25	2.25	4.5	4.5	4.5	4.5	4.5
6 Intermittently permissible torque at gear output	Nm 1.1	3.2	3.2	3.2	6.2	6.2	6.2	6.2	6.2
7 Max. efficiency	% 90	80	80	80	70	70	70	70	70
8 Weight	g 120	150	150	150	220	220	220	220	220
10 Mass inertia	gcm ² 1.15	0.65	0.65	0.65	0.65	0.65	0.65	0.65	0.65
11 Gearhead length L1	mm 26.5	36.0	36.0	36.0	45.5	45.5	45.5	45.5	45.5



maxon Modular System

+ Motor	Page	+ Sensor/Brake	Page	Overall length [mm] = Motor length + gearhead length + (sensor / brake) + assembly parts										
RE 25, 10 W	99			81.1	90.6	90.6	90.6	100.1	100.1	100.1	100.1	100.1	100.1	100.1
RE 25, 10 W	99	MR	302	92.1	101.6	101.6	101.6	111.1	111.1	111.1	111.1	111.1	111.1	111.1
RE 25, 10 W	99	Enc 22	304	95.2	104.7	104.7	104.7	114.2	114.2	114.2	114.2	114.2	114.2	114.2
RE 25, 10 W	99	HED_5540	305/307	101.9	111.4	111.4	111.4	120.9	120.9	120.9	120.9	120.9	120.9	120.9
RE 25, 10 W	99	DCT 22	315	103.4	112.9	112.9	112.9	122.4	122.4	122.4	122.4	122.4	122.4	122.4
RE 25, 20 W	100			69.6	79.1	79.1	79.1	88.6	88.6	88.6	88.6	88.6	88.6	88.6
RE 25, 20 W	101			81.1	90.6	90.6	90.6	100.1	100.1	100.1	100.1	100.1	100.1	100.1
RE 25, 20 W	101	MR	302	92.1	101.6	101.6	101.6	111.1	111.1	111.1	111.1	111.1	111.1	111.1
RE 25, 20 W	101	Enc 22	304	95.2	104.7	104.7	104.7	114.2	114.2	114.2	114.2	114.2	114.2	114.2
RE 25, 20 W	101	HED_5540	305/307	101.9	111.4	111.4	111.4	120.9	120.9	120.9	120.9	120.9	120.9	120.9
RE 25, 20 W	101	DCT 22	315	103.4	112.9	112.9	112.9	122.4	122.4	122.4	122.4	122.4	122.4	122.4
RE 25, 20 W	101	AB 28	348	115.2	124.7	124.7	124.7	134.2	134.2	134.2	134.2	134.2	134.2	134.2
RE 25, 20 W	101	HED_5540 / AB 28	305/348	132.3	141.8	141.8	141.8	151.3	151.3	151.3	151.3	151.3	151.3	151.3
RE 30, 60 W	103			71.3	80.8	80.8	80.8	90.3	90.3	90.3	90.3	90.3	90.3	90.3
RE 30, 60 W	103	MR	303	78.4	87.9	87.9	87.9	97.4	97.4	97.4	97.4	97.4	97.4	97.4
RE 35, 90 W	104			80.4	89.9	89.9	89.9	99.4	99.4	99.4	99.4	99.4	99.4	99.4
RE 35, 90 W	104	MR	303	85.7	95.2	95.2	95.2	104.7	104.7	104.7	104.7	104.7	104.7	104.7
RE 35, 90 W	104	HED_5540	305/307	90.1	99.6	99.6	99.6	109.1	109.1	109.1	109.1	109.1	109.1	109.1
RE 35, 90 W	104	DCT 22	315	95.6	105.1	105.1	105.1	114.6	114.6	114.6	114.6	114.6	114.6	114.6
RE 35, 90 W	104	AB 28	348	107.0	116.5	116.5	116.5	126.0	126.0	126.0	126.0	126.0	126.0	126.0
RE 35, 90 W	104	HED_5540 / AB 28	305/307	97.6	107.1	107.1	107.1	116.6	116.6	116.6	116.6	116.6	116.6	116.6
A-max 26	125-132			109.0	118.5	118.5	118.5	128.0	128.0	128.0	128.0	128.0	128.0	128.0
A-max 26	125-131	MEnc 13	313	118.3	127.8	127.8	127.8	137.3	137.3	137.3	137.3	137.3	137.3	137.3
A-max 26	126-132	MR	302	115.7	125.2	125.2	125.2	134.7	134.7	134.7	134.7	134.7	134.7	134.7
A-max 26	126-132	Enc 22	304	133.7	143.2	143.2	143.2	152.7	152.7	152.7	152.7	152.7	152.7	152.7
A-max 26	126-132	HED_5540	305/307	150.8	160.3	160.3	160.3	169.8	169.8	169.8	169.8	169.8	169.8	169.8
A-max 32	133/135			89.5	99.0	99.0	99.0	108.5	108.5	108.5	108.5	108.5	108.5	108.5
A-max 32	134/136			88.1	97.6	97.6	97.6	107.1	107.1	107.1	107.1	107.1	107.1	107.1
A-max 32	134/136	MR	303	99.3	108.8	108.8	108.8	118.3	118.3	118.3	118.3	118.3	118.3	118.3
A-max 32	134/136	HED_5540	305/307	108.9	118.4	118.4	118.4	127.9	127.9	127.9	127.9	127.9	127.9	127.9
EC 32, 80 W	180			93.0	102.5	102.5	102.5	112.0	112.0	112.0	112.0	112.0	112.0	112.0
EC 32, 80 W	180	HED_5540	305/307	111.4	120.9	120.9	120.9	130.4	130.4	130.4	130.4	130.4	130.4	130.4
EC 32, 80 W	180	Res 26	316	113.1	122.6	122.6	122.6	132.1	132.1	132.1	132.1	132.1	132.1	132.1