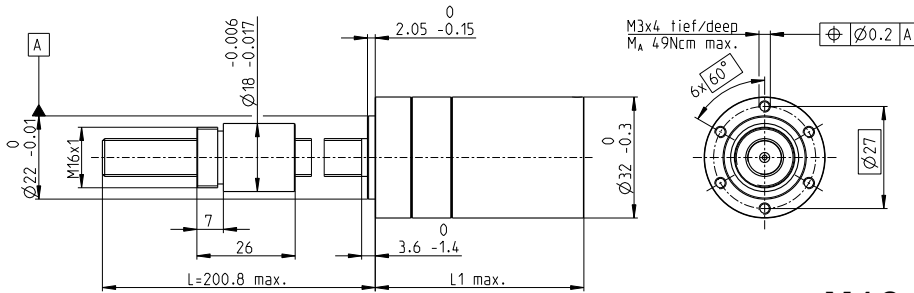


Screw Drive GP 32 S $\varnothing 32$ mm, ball screw

screw drive



M 1:2

Technical Data

Screw	$\varnothing 10 \times 2$, stainless steel
Standard length	200.8 mm
Special length (5 mm steps)	max. 600 mm
Nut (standard)	thread nut
Material	100CR6, hardened
Axial play	< 0.01 mm
Planetary gearhead	straight teeth
Bearing	ball bearing/thrust roller bearing
Radial play, 5 mm from flange	< 0.05 mm
Axial play	preloaded
Max. continuous input speed ²	8000 rpm
Recommended temperature range	-15...+80°C
Max. axial load (static) ¹	2700 N
Number of stages	0 1 2 3 4
Max. radial load, 15 mm from flange	200 N 200 N 350 N 400 N 400 N

- Stock program
- Standard program
- Special program (on request)

Part Numbers

	363970	363971	363974	363979	363980	363985	363990	363995	364000
Screw Drive Data									
1 Reduction	1:1	3.7:1	14:1	33:1	51:1	111:1	246:1	492:1	762:1
2 Absolute reduction	$\frac{1}{1}$	$\frac{26}{7}$	$\frac{676}{49}$	$\frac{529}{16}$	$\frac{17576}{343}$	$\frac{13824}{125}$	$\frac{421824}{1715}$	$\frac{86112}{175}$	$\frac{19044}{25}$
20 Max. feed velocity ¹	mm/s 133	72	19	8.1	5.2	2.4	1.1	0.5	0.3
21 Max. feed force (continuous) ¹	N 386	474	739	983	1137	1473	1921	2420	2700
22 Max. feed force (intermittent) ¹	N 1023	1255	1956	2604	2700	2700	2700	2700	2700
Part Numbers									
1 Reduction		4.8:1	18:1		66:1	123:1	295:1	531:1	913:1
2 Absolute reduction		$\frac{24}{5}$	$\frac{624}{35}$		$\frac{16224}{245}$	$\frac{6877}{56}$	$\frac{101062}{343}$	$\frac{331776}{625}$	$\frac{36501}{40}$
20 Max. feed velocity ¹	mm/s	56	15		4.0	2.2	0.9	0.5	0.3
21 Max. feed force (continuous) ¹	N	517	803		1239	1524	2041	2482	2700
22 Max. feed force (intermittent) ¹	N	1369	2127		2700	2700	2700	2700	2700
Part Numbers									
1 Reduction		5.8:1	21:1		79:1	132:1	318:1	589:1	1093:1
2 Absolute reduction		$\frac{23}{4}$	$\frac{299}{14}$		$\frac{3887}{49}$	$\frac{3312}{25}$	$\frac{389376}{1225}$	$\frac{20631}{35}$	$\frac{279841}{256}$
20 Max. feed velocity ¹	mm/s	46	13		3.4	2.0	0.8	0.5	0.2
21 Max. feed force (continuous) ¹	N	551	846		1315	1561	2092	2569	2700
22 Max. feed force (intermittent) ¹	N	1458	2239		2700	2700	2700	2700	2700
Part Numbers									
1 Reduction			23:1		86:1	159:1	411:1	636:1	
2 Absolute reduction			$\frac{576}{25}$		$\frac{14976}{175}$	$\frac{1587}{10}$	$\frac{359424}{675}$	$\frac{79488}{125}$	
20 Max. feed velocity ¹	mm/s		12		3.1	1.7	0.6	0.4	
21 Max. feed force (continuous) ¹	N		872		1353	1661	2279	2636	
22 Max. feed force (intermittent) ¹	N		2308		2700	2700	2700	2700	
Part Numbers									
1 Reduction			28:1		103:1	190:1	456:1	706:1	
2 Absolute reduction			$\frac{138}{5}$		$\frac{3588}{35}$	$\frac{12167}{64}$	$\frac{89401}{196}$	$\frac{15817}{224}$	
20 Max. feed velocity ¹	mm/s		9.5		2.6	1.4	0.6	0.4	
21 Max. feed force (continuous) ¹	N		931		1437	1762	2359	2700	
22 Max. feed force (intermittent) ¹	N		2465		2700	2700	2700	2700	
4 Number of stages	0	1	2	2	3	3	4	4	4
7 Max. efficiency gearhead incl. screw	% 94	75	71	71	66	66	56	56	56
8 Weight ¹	g 304	304	331	331	359	359	387	387	387
9 Average backlash no load	° 0.7	0.7	0.8	0.8	1.0	1.0	1.0	1.0	1.0
23 Mechanical positioning accuracy ¹	mm 0.037	0.037	0.037	0.037	0.039	0.039	0.039	0.039	0.039
10 Mass inertia gearhead incl. screw ¹	gcm ² 42.3	4.2	0.9	0.9	0.7	0.7	0.7	0.7	0.7
11 Gearhead length L1	mm 51.0	51.0	57.7	57.7	64.4	64.4	71.1	71.1	71.1

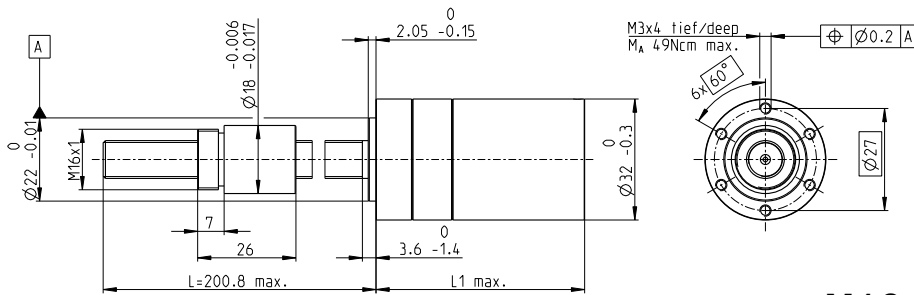
¹ based on screw length 200.8 mm (standard length) ² for reduction 1:1 = 4000 rpm

maxon Modular System

+ Motor	Page	+ Sensor/Brake	Page	Overall length [mm] = Motor length + gearhead length + (sensor/brake) + assembly parts								
RE 25	144/146			105.6	105.6	112.3	112.3	119.0	119.0	125.7	125.7	125.7
RE 25	144/146	MR	478	116.6	116.6	123.3	123.3	130.0	130.0	136.7	136.7	136.7
RE 25	144/146	Enc 22	483	119.7	119.7	126.4	126.4	133.1	133.1	139.8	139.8	139.8
RE 25	144/146	HED_5540	486/488	126.4	126.4	133.1	133.1	139.8	139.8	146.5	146.5	146.5
RE 25	144/146	DCT 22	495	127.9	127.9	134.6	134.6	141.3	141.3	148.0	148.0	148.0
RE 25, 20 W	145			94.1	94.1	100.8	100.8	107.5	107.5	114.2	114.2	114.2
RE 25, 20 W	145	MR	478	105.1	105.1	111.8	111.8	118.5	118.5	125.2	125.2	125.2
RE 25, 20 W	145	HED_5540	486/488	114.9	114.9	121.6	121.6	128.3	128.3	135.0	135.0	135.0
RE 25, 20 W	145	DCT 22	495	116.4	116.4	123.1	123.1	129.8	129.8	136.5	136.5	136.5
RE 25, 20 W	145	AB 28	535	128.2	128.2	134.9	134.9	141.6	141.6	148.3	148.3	148.3
RE 25, 20 W	145	HED_5540/AB 28	486/535	145.4	145.4	152.1	152.1	158.8	158.8	165.5	165.5	165.5
RE 25, 20 W	146	AB 28	535	139.7	139.7	146.4	146.4	153.1	153.1	159.8	159.8	159.8
RE 25, 20 W	146	HED_5540/AB 28	486/535	156.9	156.9	163.6	163.6	170.3	170.3	177.0	177.0	177.0
RE 30, 60 W	148			119.1	119.1	125.8	125.8	132.5	132.5	139.2	139.2	139.2
RE 30, 60 W	148	MR	479	130.5	130.5	137.2	137.2	143.9	143.9	150.6	150.6	150.6
RE 30, 60 W	148	HED_5540	486/488	139.9	139.9	146.6	146.6	153.3	153.3	160.0	160.0	160.0

Continuation of the modular system on pages 429 and 432.

Screw Drive GP 32 S $\varnothing 32$ mm, ball screw



M 1:2

Technical Data

Screw	$\varnothing 10 \times 2$, stainless steel
Standard length	200.8 mm
Special length (5 mm steps)	max. 600 mm
Nut (standard)	threaded nut
Material	100CR6, hardened
Axial play	< 0.01 mm
Planetary gearhead	straight teeth
Bearing	ball bearing/thrust roller bearing
Radial play, 5 mm from flange	< 0.05 mm
Axial play	preloaded
Max. continuous input speed ²	8000 rpm
Recommended temperature range	-15...+80°C
Max. axial load (static) ¹	2700 N
Number of stages	0 1 2 3 4
Max. radial load, 15 mm from flange	200 N 200 N 350 N 400 N 400 N

screw drive

- Stock program
- Standard program
- Special program (on request)

Part Numbers

363970	363971	363974	363979	363980	363985	363990	363995	364000
	363972	363975		363981	363986	363991	363996	364001
	363973	363976		363982	363987	363992	363997	364002
		363977		363983	363988	363993	363998	
		363978		363984	363989	363994	363999	

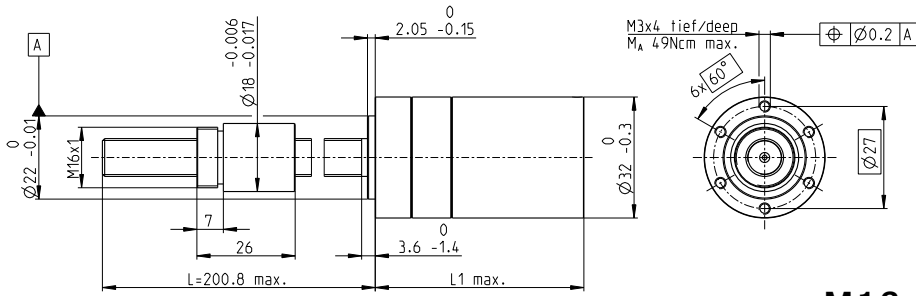


maxon Modular System

+ Motor	Page	+ Sensor/Brake	Page	Overall length [mm] = Motor length + gearhead length + (sensor/brake) + assembly parts								
RE 35, 90 W	149			122.1	122.1	128.8	128.8	135.5	135.5	142.2	142.2	142.2
RE 35, 90 W	149	MR	479	133.5	133.5	140.2	140.2	146.9	146.9	153.6	153.6	153.6
RE 35, 90 W	149	HED_5540	486/488	142.8	142.8	149.5	149.5	156.2	156.2	162.9	162.9	162.9
RE 35, 90 W	149	DCT 22	495	140.2	140.2	146.9	146.9	153.6	153.6	160.3	160.3	160.3
RE 35, 90 W	149	AB 28	535	158.2	158.2	164.9	164.9	171.6	171.6	178.3	178.3	178.3
RE 35, 90 W	149	HEDS 5540/AB 28	486/535	175.4	175.4	182.1	182.1	188.8	188.8	195.5	195.5	195.5
A-max 26	174			-	95.8	102.5	102.5	109.2	109.2	115.9	115.9	115.9
A-max 26	174	MR	478	-	104.6	111.3	111.3	118.0	118.0	124.7	124.7	124.7
A-max 26	174	Enc 22	483	-	110.2	116.9	116.9	123.6	123.6	130.3	130.3	130.3
A-max 26	174	HED_5540	487/489	-	114.2	120.9	120.9	127.6	127.6	134.3	134.3	134.3
A-max 32	175			-	114.0	120.7	120.7	127.4	127.4	134.1	134.1	134.1
A-max 32	176			-	112.6	119.3	119.3	126.0	126.0	132.7	132.7	132.7
A-max 32	176	MR	479	-	123.8	130.5	130.5	137.2	137.2	143.9	143.9	143.9
A-max 32	176	HED_5540	486/488	-	133.4	140.1	140.1	146.8	146.8	153.5	153.5	153.5
EC 32, 80 W	238			111.1	111.1	117.8	117.8	124.5	124.5	131.2	131.2	131.2
EC 32, 80 W	238	HED_5540	486/488	129.5	129.5	136.2	136.2	142.9	142.9	149.6	149.6	149.6
EC 32, 80 W	238	Res 26	496	131.2	131.2	137.9	137.9	144.6	144.6	151.3	151.3	151.3
EC-max 22, 25 W	249			-	99.6	106.3	106.3	113.0	113.0	119.7	119.7	119.7
EC-max 22, 25 W	249	MR	479	-	109.2	115.9	115.9	122.6	122.6	129.3	129.3	129.3
EC-max 22, 25 W	249	AB 20	430	-	135.2	141.9	141.9	148.6	148.6	155.3	155.3	155.3
EC-max 30, 40 W	250			-	93.1	99.8	99.8	106.5	106.5	113.2	113.2	113.2
EC-max 30, 40 W	250	MR	479	-	105.3	112.0	112.0	118.7	118.7	125.4	125.4	125.4
EC-max 30, 40 W	250	HEDL 5540	489	-	113.7	120.4	120.4	127.1	127.1	133.8	133.8	133.8
EC-max 30, 40 W	250	AB 20	430	-	128.7	135.4	135.4	142.1	142.1	148.8	148.8	148.8
EC-max 30, 40 W	250	HEDL 5540/AB 20	489/430	-	149.3	156.0	156.0	162.7	162.7	169.4	169.4	169.4
EC-max 30, 60 W	251			115.1	115.1	121.8	121.8	128.5	128.5	135.2	135.2	135.2
EC-max 30, 60 W	251	MR	478	127.3	127.3	134.0	134.0	140.7	140.7	147.4	147.4	147.4
EC-max 30, 60 W	251	HEDL 5540	490	135.7	135.7	142.4	142.4	149.1	149.1	155.8	155.8	155.8
EC-max 30, 60 W	251	AB 20	430	150.7	150.7	157.4	157.4	164.1	164.1	170.8	170.8	170.8
EC-max 30, 60 W	251	HEDL 5540/AB 20	490/430	171.3	171.3	178.0	178.0	184.7	184.7	191.4	191.4	191.4
EC-4pole 22, 90 W	257			99.7	99.7	106.4	106.4	113.1	113.1	119.8	119.8	119.8
EC-4pole 22, 90 W	257	22 EMT	457	125.5	125.5	132.2	132.2	138.9	138.9	145.6	145.6	145.6
EC-4pole 22, 90 W	257	16 EASY/XT/Abs.	464-468	111.9	111.9	118.6	118.6	125.3	125.3	132.0	132.0	132.0
EC-4pole 22, 90 W	257	16 EASY Abs. XT	470	112.4	112.4	119.1	119.1	125.8	125.8	132.5	132.5	132.5
EC-4pole 22, 90 W	257	16 RIO	481	110.4	110.4	117.1	117.1	123.8	123.8	130.5	130.5	130.5
EC-4pole 22, 90 W	257	AEDL/HEDL	484/490	121.2	121.2	127.9	127.9	134.6	134.6	141.3	141.3	141.3
EC-4pole 22, 120 W	258			117.1	117.1	123.8	123.8	130.5	130.5	137.2	137.2	137.2
EC-4pole 22, 120 W	258	22 EMT	457	142.9	142.9	149.6	149.6	156.3	156.3	163.0	163.0	163.0
EC-4pole 22, 120 W	258	16 EASY/XT/Abs.	464-468	129.3	129.3	136.0	136.0	142.7	142.7	149.4	149.4	149.4
EC-4pole 22, 120 W	258	16 EASY Abs. XT	470	129.8	129.8	136.5	136.5	143.2	143.2	149.9	149.9	149.9
EC-4pole 22, 120 W	258	16 RIO	481	127.8	127.8	134.5	134.5	141.2	141.2	147.9	147.9	147.9
EC-4pole 22, 120 W	258	AEDL/HEDL	484/490	138.6	138.6	145.3	145.3	152.0	152.0	158.7	158.7	158.7

Screw Drive GP 32 S $\varnothing 32$ mm, ball screw

screw drive



M 1:2

Technical Data

Screw	$\varnothing 10 \times 2$, stainless steel
Standard length	200.8 mm
Special length (5 mm steps)	max. 600 mm
Nut (standard)	thread nut
Material	100CR6, hardened
Axial play	< 0.01 mm
Planetary gearhead	straight teeth
Bearing	ball bearing/thrust roller bearing
Radial play, 5 mm from flange	< 0.05 mm
Axial play	preloaded
Max. continuous input speed ²	8000 rpm
Recommended temperature range	-15...+80°C
Max. axial load (static) ¹	2700 N
Number of stages	0 1 2 3 4
Max. radial load, 15 mm from flange	200 N 200 N 350 N 400 N 400 N

- Stock program
- Standard program
- Special program (on request)

Part Numbers

363970	363971	363974	363979	363980	363985	363990	363995	364000
	363972	363975		363981	363986	363991	363996	364001
	363973	363976		363982	363987	363992	363997	364002
		363977		363983	363988	363993	363998	
		363978		363984	363989	363994	363999	



maxon Modular System

+ Motor	Page	+ Sensor/Brake	Page	Overall length [mm] = Motor length + gearhead length + (sensor/brake) + assembly parts								
EC-4pole 30, 100 W	259			98.1	98.1	104.8	104.8	111.5	111.5	118.2	118.2	118.2
EC-4pole 30, 100 W	259	16 EASY/XT/Abs.	464-468	112.0	112.0	118.7	118.7	125.4	125.4	132.1	132.1	132.1
EC-4pole 30, 100 W	259	16 EASY Abs. XT	470	112.5	112.5	119.2	119.2	125.9	125.9	132.6	132.6	132.6
EC-4pole 30, 100 W	259	22 EMT	457	126.0	126.0	132.7	132.7	139.4	139.4	146.1	146.1	146.1
EC-4pole 30, 100 W	259	16 RIO	481	110.5	110.5	117.2	117.2	123.9	123.9	130.6	130.6	130.6
EC-4pole 30, 100 W	259	AEDL/HEDL	484/490	118.7	118.7	125.4	125.4	132.1	132.1	138.8	138.8	138.8
EC-4pole 30, 100 W	259	AB 20	430	134.3	134.3	141.0	141.0	147.7	147.7	154.4	154.4	154.4
EC-4pole 30, 100 W	259	16 EASY/XT/Abs./AB 20	464/430	148.4	148.4	155.1	155.1	161.8	161.8	168.5	168.5	168.5
EC-4pole 30, 100 W	259	16 EASY Abs. XT/AB 20	470/430	148.9	148.9	155.6	155.6	162.3	162.3	169.0	169.0	169.0
EC-4pole 30, 100 W	259	22 EMT/AB 20	457/430	165.5	165.5	172.2	172.2	178.9	178.9	185.6	185.6	185.6
EC-4pole 30, 100 W	259	16 RIO/AB 20	481/430	146.9	146.9	153.6	153.6	160.3	160.3	167.0	167.0	167.0
EC-4pole 30, 100 W	259	AEDL/HEDL/AB 20	484/430	154.9	154.9	161.6	161.6	168.3	168.3	175.0	175.0	175.0
EC-4pole 30, 200 W	261			115.1	115.1	121.8	121.8	128.5	128.5	135.2	135.2	135.2
EC-4pole 30, 200 W	261	16 EASY/XT/Abs.	464-468	129.0	129.0	135.7	135.7	142.4	142.4	149.1	149.1	149.1
EC-4pole 30, 200 W	261	16 EASY Abs. XT	470	129.5	129.5	136.2	136.2	142.9	142.9	149.6	149.6	149.6
EC-4pole 30, 200 W	261	22 EMT	457	143.0	143.0	149.7	149.7	156.4	156.4	163.1	163.1	163.1
EC-4pole 30, 200 W	261	16 RIO	481	127.5	127.5	134.2	134.2	140.9	140.9	147.6	147.6	147.6
EC-4pole 30, 200 W	261	AEDL/HEDL	484/490	135.7	135.7	142.4	142.4	149.1	149.1	155.8	155.8	155.8
EC-4pole 30, 200 W	261	AB 20	430	151.3	151.3	158.0	158.0	164.7	164.7	171.4	171.4	171.4
EC-4pole 30, 200 W	261	16 EASY/XT/Abs./AB 20	464/430	165.4	165.4	172.1	172.1	178.8	178.8	185.5	185.5	185.5
EC-4pole 30, 200 W	261	16 EASY Abs. XT/AB 20	470/430	165.9	165.9	172.6	172.6	179.3	179.3	186.0	186.0	186.0
EC-4pole 30, 200 W	261	22 EMT/AB 20	457/430	182.5	182.5	189.2	189.2	195.9	195.9	202.6	202.6	202.6
EC-4pole 30, 200 W	261	16 RIO/AB 20	481/430	163.9	163.9	170.6	170.6	177.3	177.3	184.0	184.0	184.0
EC-4pole 30, 200 W	261	AEDL/HEDL/AB 20	484/430	171.9	171.9	178.6	178.6	185.3	185.3	192.0	192.0	192.0
EC-i 30, 30 W	268			93.3	93.3	100.0	100.0	106.7	106.7	113.4	113.4	113.4
EC-i 30, 30 W	268	16 EASY/Abs.	464-468	105.0	105.0	111.7	111.7	118.4	118.4	125.1	125.1	125.1
EC-i 30, 30 W	268	16 RIO	481	103.5	103.5	110.2	110.2	116.9	116.9	123.6	123.6	123.6
EC-i 30, 30 W	268	AEDL/HEDL	484/488	114.0	114.0	120.7	120.7	127.4	127.4	134.1	134.1	134.1
EC-i 30, 45 W	269			93.3	93.3	100.0	100.0	106.7	106.7	113.4	113.4	113.4
EC-i 30, 45 W	269	16 EASY/Abs.	464-468	105.0	105.0	111.7	111.7	118.4	118.4	125.1	125.1	125.1
EC-i 30, 45 W	269	16 RIO	481	103.5	103.5	110.2	110.2	116.9	116.9	123.6	123.6	123.6
EC-i 30, 45 W	269	AEDL/HEDL	484/488	114.0	114.0	120.7	120.7	127.4	127.4	134.1	134.1	134.1
EC-i 30, 50 W	270			115.3	115.3	122.0	122.0	128.7	128.7	135.4	135.4	135.4
EC-i 30, 50 W	270	16 EASY/Abs.	464-468	127.0	127.0	133.7	133.7	140.4	140.4	147.1	147.1	147.1
EC-i 30, 50 W	270	16 RIO	481	125.5	125.5	132.2	132.2	138.9	138.9	145.6	145.6	145.6
EC-i 30, 50 W	270	AEDL/HEDL	484/488	136.0	136.0	142.7	142.7	149.4	149.4	156.1	156.1	156.1
EC-i 30, 75 W	271			115.3	115.3	122.0	122.0	128.7	128.7	135.4	135.4	135.4
EC-i 30, 75 W	271	16 EASY/Abs.	464-468	127.0	127.0	133.7	133.7	140.4	140.4	147.1	147.1	147.1
EC-i 30, 75 W	271	16 RIO	481	125.5	125.5	132.2	132.2	138.9	138.9	145.6	145.6	145.6
EC-i 30, 75 W	271	AEDL/HEDL	484/488	136.0	136.0	142.7	142.7	149.4	149.4	156.1	156.1	156.1
EC-i 40, 50 W	272			82.7	82.7	89.4	89.4	96.1	96.1	102.8	102.8	102.8
EC-i 40, 50 W	272	16 EASY/Abs.	464-468	94.4	94.4	101.1	101.1	107.8	107.8	114.5	114.5	114.5
EC-i 40, 50 W	272	16 RIO	481	97.2	97.2	103.9	103.9	110.6	110.6	117.3	117.3	117.3
EC-i 40, 50 W	272	AEDL/HEDL	484/488	105.7	105.7	112.4	112.4	119.1	119.1	125.8	125.8	125.8
EC-i 40, 70 W	274			92.7	92.7	99.4	99.4	106.1	106.1	112.8	112.8	112.8
EC-i 40, 70 W	274	16 EASY/Abs.	464-468	104.4	104.4	111.1	111.1	117.8	117.8	124.5	124.5	124.5
EC-i 40, 70 W	274	16 RIO	481	107.2	107.2	113.9	113.9	120.6	120.6	127.3	127.3	127.3
EC-i 40, 70 W	274	AEDL/HEDL	484/488	115.7	115.7	122.4	122.4	129.1	129.1	135.8	135.8	135.8