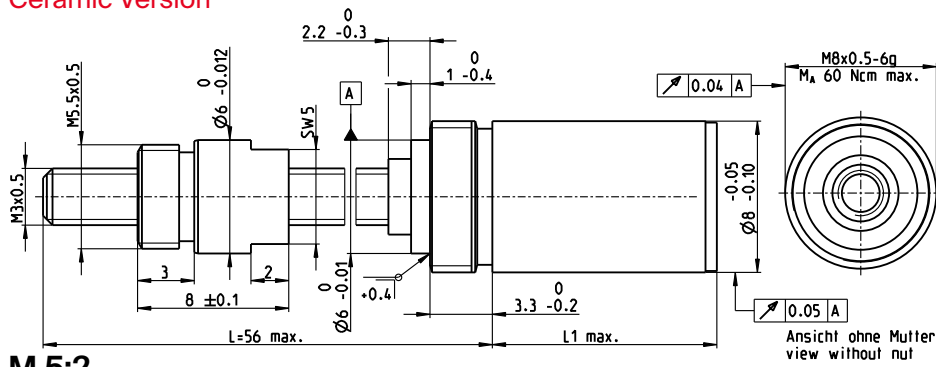


# Screw Drive GP 8 S $\varnothing 8$ mm, metric lead screw

Ceramic Version

screw drive



**M 5:2**

## Technical Data

Screw	M3 x 0.5, ceramic
Standard length	56 mm
Special length (5 mm steps)	max. 100 mm
Nut (standard)	thread nut
Material	stainless steel
Axial play	< 0.09 mm
Planetary gearhead	straight teeth
Bearing	ball bearing
Radial play, 5 mm from flange	< 0.08 mm
Axial play	preloaded
Max. continuous input speed	12000 rpm
Recommended temperature range	-15...+80°C
Max. axial load (static) <sup>1</sup>	25 N
Number of stages	1 2 3 4 5
Max. radial load, 5 mm from flange	5 N 5 N 5 N 5 N 5 N

- Stock program
- Standard program
- Special program (on request)

## Part Numbers

Screw Drive Data (provisional)	473636	473637	473639	473640	473641			
1 Reduction	4:1	16:1	64:1	256:1	1024:1			
2 Absolute reduction	4 <sub>1</sub>	16 <sub>1</sub>	64 <sub>1</sub>	256 <sub>1</sub>	1024 <sub>1</sub>			
20 Max. feed velocity <sup>1</sup>	mm/s	25	6.3	1.6	0.4	0.1		
21 Max. feed force (continuous) <sup>1</sup>	N	3	7	11	17	27		
22 Max. feed force (intermittent) <sup>1</sup>	N	14	22	32	32	32		
4 Number of stages		1	2	3	4	5		
7 Max. efficiency gearhead incl. screw	%	38	34	31	28	25		
8 Weight <sup>1</sup>	g	6.3	6.9	7.5	8.1	8.7		
9 Average backlash no load	°	1.8	2.0	2.2	2.5	2.8		
23 Mechanical positioning accuracy <sup>1</sup>	mm	0.087	0.087	0.087	0.087	0.088		
10 Mass inertia gearhead incl. screw <sup>1</sup>	gcm <sup>2</sup>	0.005	0.004	0.004	0.004	0.004		
11 Gearhead length L1	mm	7.0	9.6	12.2	14.8	17.4		

<sup>1</sup> based on screw length 56 mm



maxon Modular System				Overall length [mm] = Motor length + gearhead length + (sensor / brake) + assembly parts				
+ Motor	Page	+ Sensor/Brake	Page					
RE 8, 0.5 W, A	118			23.7	26.3	28.9	31.5	34.1
RE 8, 0.5 W, B	118			26.7	29.3	31.9	34.5	37.1
RE 8, 0.5 W, A	118	MR	473	30.3	32.9	35.5	38.1	40.7
RE 8, 0.5 W, A	118	Enc 8 OPT	480	31.9	34.5	37.1	39.7	42.3