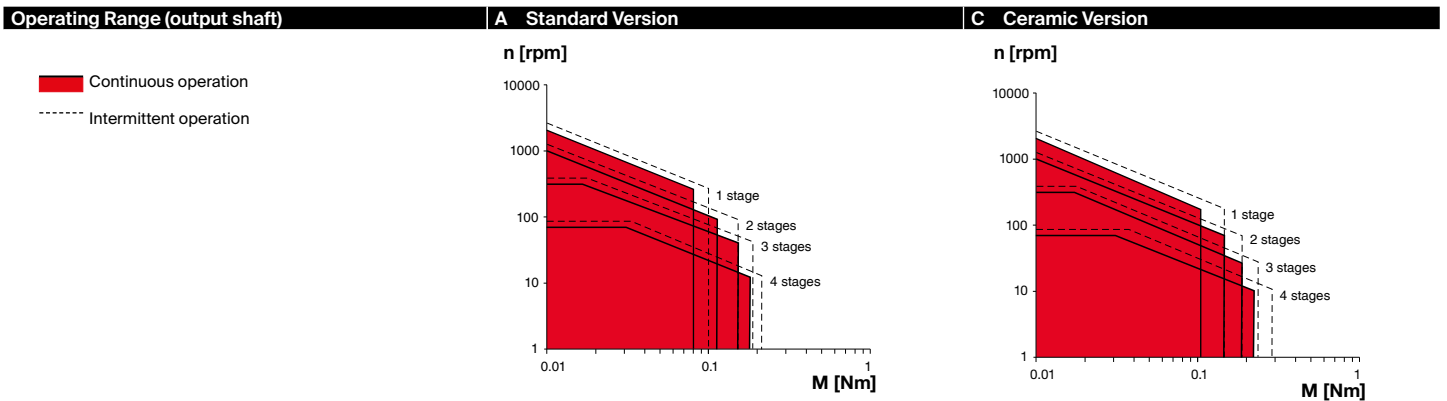


# GPX 12 Ø12 mm, Planetary Gearhead

GPX



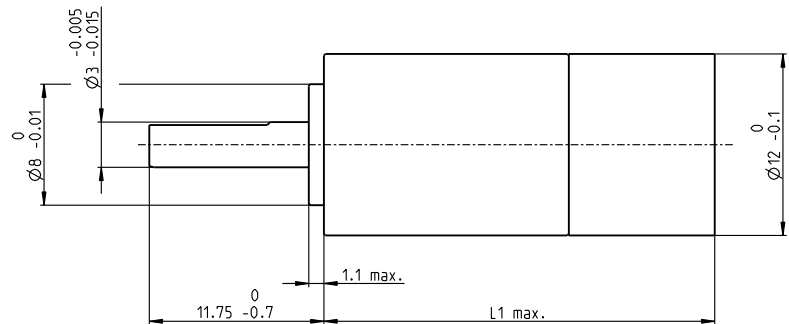
Key Data	A Standard Version	C Ceramic Version
Max. transmittable power	W 2	2.4
Max. continuous torque	Nm 0.17	0.23
Max. continuous input speed	rpm 16000	16000
Ambient temperature	°C -40 ... +100	-40 ... +100
Bearing at output	Ball bearing	Ball bearing



Specifications	A Standard Version				C Ceramic Version			
	1	2	3	4	1	2	3	4
Number of stages	1	2	3	4	1	2	3	4
Max. transmittable continuous power	W 2.0	1.0	0.50	0.25	2.4	1.2	0.60	0.30
Max. transmittable intermittent power	W 2.5	1.25	0.65	0.30	3.0	1.50	0.80	0.40
Max. continuous torque	Nm 0.08	0.11	0.14	0.17	0.11	0.15	0.19	0.23
Max. intermittent torque	Nm 0.10	0.14	0.18	0.21	0.15	0.19	0.24	0.29
Max. continuous input speed	rpm 16000	16000	16000	16000	16000	16000	16000	16000
Max. intermittent input speed	rpm 20000	20000	20000	20000	20000	20000	20000	20000
Max. efficiency	% 90	80	75	65	90	80	75	65
Average backlash no load	° 1.2	1.5	1.8	2.1	1.2	1.5	1.8	2.1
Max. axial load (dynamic)	N 20	20	20	20	20	20	20	20
Max. radial load, 5 mm from flange	N 30	35	50	50	30	35	50	50
Gearhead length L <sup>1</sup>	mm 15.5	20.4	25.2	30.1	15.5	20.4	25.2	30.1
Weight	g 11	14	17	19	11	14	17	19

Configuration	A Standard Version				C Ceramic Version			
	1	2	3	4	1	2	3	4
Number of stages	1	2	3	4	1	2	3	4
Reduction	X:1 3.9, 5.3	16, 21, 26, 28, 35	62, 83, 103, 111, 138, 150, 172, 186, 231	243, 326, 406, 439, 546, 590, 679, 734, 794, 913, 987, 1135, 1227, 1526	3.9, 5.3	16, 21, 26, 28, 35	62, 83, 103, 111, 138, 150, 172, 186, 231	243, 326, 406, 439, 546, 590, 679, 734, 794, 913, 987, 1135, 1227, 1526
Absolute reduction: (see online)								
Version	Standard/ceramic version/noise reduced/reduced backlash/high power							
Flange	Standard flange/configurable flange							
Shaft	Length/flat face							

maxon Modular System	Page	Dimensions
maxon DC motor	Nº of stages [opt.]	
DCX 12 S	1-4	89
DCX 12 L	1-4	90



<sup>1</sup>This length may vary depending on the configuration and choice of motor. The effective length is calculated at the end of the configuration process.

[gpx.maxongroup.com](http://gpx.maxongroup.com)