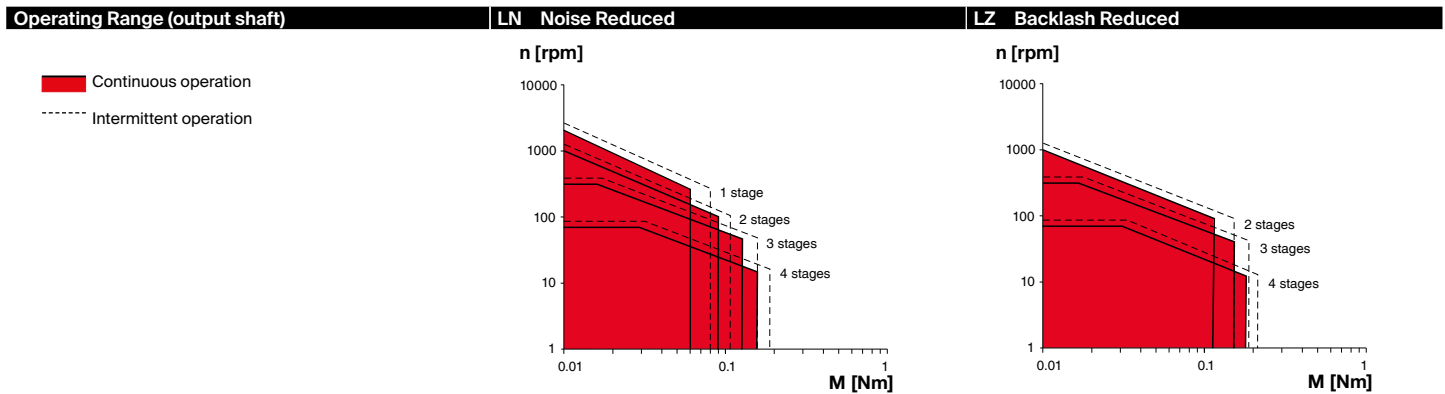


GPX 12 Ø12 mm, Planetary Gearhead



GPX

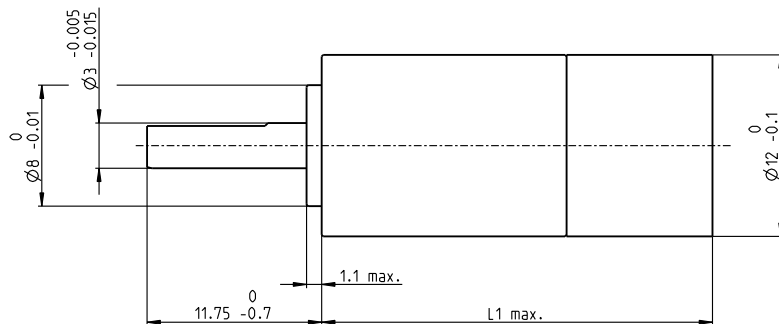
Key Data		LN Noise Reduced	LZ Backlash Reduced
Max. transmittable power	W	1.6	1
Max. continuous torque	Nm	0.14	0.2
Max. continuous input speed	rpm	16 000	16 000
Ambient temperature	°C	-40 ... +85	-40 ... +100
Bearing at output		Ball bearing	Ball bearing
Typical noise level	dBA	-5 dBA compared to standard configuration	



Specifications	LN Noise Reduced				LZ Backlash Reduced			
	1	2	3	4	2	3	4	
Number of stages								
Max. transmittable continuous power	W	1.6	0.8	0.40	0.20	1.0	0.50	0.25
Max. transmittable intermittent power	W	2.0	1.00	0.50	0.25	1.25	0.65	0.30
Max. continuous torque	Nm	0.06	0.09	0.11	0.14	0.11	0.14	0.17
Max. intermittent torque	Nm	0.08	0.11	0.14	0.18	0.14	0.18	0.21
Max. continuous input speed	rpm	16000	16000	16000	16000	16000	16000	16000
Max. intermittent input speed	rpm	20000	20000	20000	20000	20000	20000	20000
Max. efficiency	%	90	80	75	65	80	75	65
Average backlash no load	°	1.2	1.5	1.8	2.1	1.35	1.6	1.8
Max. axial load (dynamic)	N	20	20	20	20	20	20	20
Max. radial load, 5 mm from flange	N	30	35	50	50	35	50	50
Gearhead length L ¹	mm	15.5	20.4	25.2	30.1	20.4	25.2	30.1
Weight	g	11	14	17	19	14	17	19

Configuration	LN Noise Reduced				LZ Backlash Reduced			
	1	2	3	4	2	3	4	
Number of stages								
Reduction	X:1	3.9, 5.3	16, 21, 26, 28, 35	62, 83, 103, 111, 138, 150, 172, 186, 231	243, 326, 406, 439, 546, 590, 679, 734, 794, 913, 987, 1135, 1227, 1526	16, 21, 26, 28, 35	62, 83, 103, 111, 138, 150, 172, 186, 231	243, 326, 406, 439, 546, 590, 679, 734, 794, 913, 987, 1135, 1227, 1526
Absolute reduction: (see online)								
Version	Standard/ceramic version/noise reduced/backlash reduced/high power							
Flange	Standard flange/configurable flange							
Shaft	Length/flat face							

maxon Modular System		Page	Dimensions	M 2:1
maxon DC motor	Nº of stages [opt.]			
DCX 12 S	1-4	89		
DCX 12 L	1-4	90		



¹This length may vary depending on the configuration and choice of motor. The effective length is calculated at the end of the configuration process.

gpx.maxongroup.com