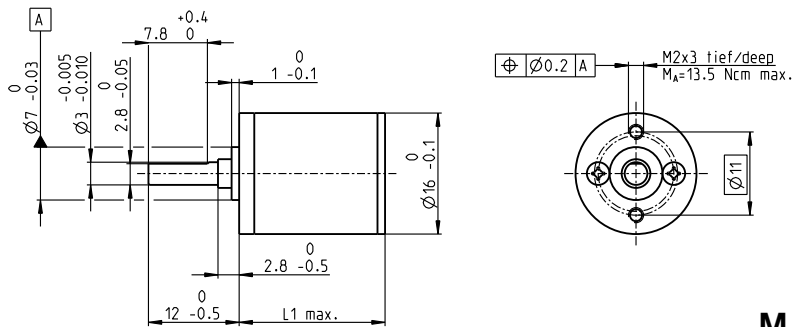


Spur Gearhead GS 16 V $\varnothing 16$ mm, 0.06–0.1 Nm

Reinforced



Technical Data

Spur Gearhead	straight teeth
Output shaft	stainless steel, hardened
Bearing at output	preloaded ball bearings
Radial play, 6.5 mm from flange	max. 0.02 mm
Axial play at axial load	< 5 N 0 mm > 5 N max. 0.05 mm
Max. axial load (dynamic)	5 N
Max. force for press fits	5 N
Max. continuous input speed	8000 rpm
Recommended temperature range	-15...+100°C
Extended range as option	-40...+100°C
Number of stages	2 3 4 5 6 7
Max. radial load, 6.5 mm from flange	10 N 15 N 20 N 22 N 22 N 22 N

gear

M 1:1

	Part Numbers						
	235066	235070	235073	235076	235079	235082	
Gearhead Data							
1 Reduction	6.4:1	22:1	76:1	261:1	900:1	3101:1	
2 Absolute reduction	$\frac{403}{63}$	$\frac{12493}{567}$	$\frac{387283}{5103}$	$\frac{12005773}{45927}$	$\frac{372178963}{413343}$	$\frac{11537547853}{3720087}$	
3 Max. motor shaft diameter mm	1.5	1.5	1.5	1.5	1.5	1.5	
Part Numbers	235068	235071	235074	235077	235080	235083	
1 Reduction	9.1:1	31:1	108:1	371:1	1278:1	4402:1	
2 Absolute reduction	$\frac{899}{99}$	$\frac{27869}{891}$	$\frac{863939}{6019}$	$\frac{26782109}{72171}$	$\frac{830245379}{649539}$	$\frac{25737606749}{5845851}$	
3 Max. motor shaft diameter mm	1.5	1.5	1.5	1.5	1.5	1.5	
Part Numbers	235069	235072	235075	235078	235081	235084	
1 Reduction	12:1	41:1	141:1	485:1	1670:1	5752:1	
2 Absolute reduction	$\frac{961}{81}$	$\frac{29791}{729}$	$\frac{923521}{6561}$	$\frac{28629151}{69049}$	$\frac{887503681}{531441}$	$\frac{27512614111}{4782969}$	
3 Max. motor shaft diameter mm	1	1	1	1	1	1	
4 Number of stages	2	3	4	5	6	7	
5 Max. continuous torque Nm	0.06	0.06	0.10	0.10	0.10	0.10	
6 Max. intermittent torque at gear output Nm	0.15	0.15	0.30	0.30	0.30	0.30	
12 Direction of rotation, drive to output	=	≠	=	≠	=	≠	
7 Max. efficiency %	81	73	66	59	53	48	
8 Weight g	13.8	14.5	15.8	17.0	17.9	18.5	
9 Average backlash no load °	1.0	1.0	1.2	1.2	1.5	1.5	
10 Mass inertia gcm ²	0.0057	0.0052	0.0035	0.0032	0.0032	0.0032	
11 Gearhead length L1 mm	14.3	17.3	19.3	21.3	23.3	25.3	



maxon Modular System				
+ Motor	Page	+ Sensor/Brake	Page	Overall length [mm] = Motor length + gearhead length + (sensor/brake) + assembly parts
A-max 16	159-162			39.8 42.8 44.8 46.8 48.8 50.8
A-max 16	160/162	MR	475/476	44.8 47.8 49.8 51.8 53.8 55.8