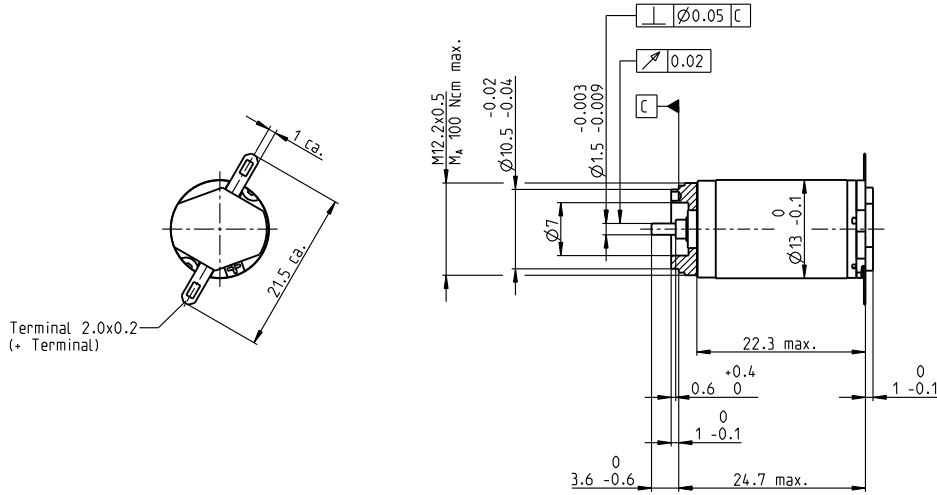


RE 13 \varnothing 13 mm, graphite brushes, 1.5 watt

RE



M 1:1

- Stock program
- Standard program
- Special program (on request)

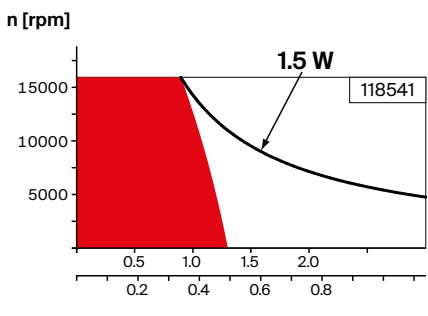
Part Numbers

	118536	118537	118538	118539	118540	118541	118542	118543	118544	118545	118546	118547	118548	118549	118550
--	--------	--------	--------	--------	--------	--------	--------	--------	--------	--------	--------	--------	--------	--------	--------

Motor Data																
Values at nominal voltage																
1 Nominal voltage	V	1.2	1.5	2.4	3	3.6	4.2	4.8	6	7.2	9	12	12	15	18	20
2 No load speed	rpm	13300	13300	13700	13200	13000	13300	12300	12700	12300	12300	13300	12300	13100	14000	13300
3 No load current	mA	482	394	259	197	159	140	111	92.5	73.7	59.2	49.2	44.7	38.9	35.1	29.7
4 Nominal speed	rpm	12600	11800	10600	8520	7790	8260	7130	7480	7010	7000	8040	6940	7870	8890	8020
5 Nominal torque	mNm	0.194	0.329	0.719	1.06	1.23	1.27	1.28	1.25	1.26	1.25	1.21	1.22	1.21	1.2	1.19
6 Nominal current (max. continuous current)	A	0.72	0.72	0.72	0.72	0.659	0.588	0.481	0.39	0.316	0.252	0.199	0.186	0.157	0.139	0.119
7 Stall torque	mNm	4.07	3.25	3.33	3.19	3.3	3.56	3.26	3.25	3.16	3.12	3.28	3.01	3.23	3.51	3.22
8 Stall current	A	5.2	3.4	2.26	1.67	1.41	1.32	0.989	0.814	0.639	0.506	0.429	0.368	0.335	0.321	0.254
9 Max. efficiency	%	49	44	45	44	45	46	45	45	44	44	45	43	44	46	44
Characteristics																
10 Terminal resistance	Ω	0.231	0.441	1.06	1.8	2.56	3.18	4.85	7.37	11.3	17.8	28	32.6	44.8	56.1	78.8
11 Terminal inductance	mH	0.006	0.009	0.022	0.036	0.054	0.072	0.108	0.158	0.243	0.377	0.579	0.661	0.921	1.19	1.59
12 Torque constant	mNm/A	0.782	0.956	1.48	1.91	2.35	2.69	3.3	4	4.95	6.17	7.64	8.17	9.64	10.9	12.7
13 Speed constant	rpm/V	12200	9990	6470	5000	4070	3550	2890	2390	1930	1550	1250	1170	990	872	753
14 Speed / torque gradient	rpm/mNm	3600	4610	4660	4700	4440	4190	4250	4410	4390	4460	4570	4660	4600	4470	4680
15 Mechanical time constant	ms	13.5	14	14.1	14.2	14.1	14	14	14.1	14.2	14.2	14.3	14.3	14.3	14.2	14.4
16 Rotor inertia	gcm ²	0.358	0.291	0.29	0.288	0.303	0.318	0.315	0.306	0.308	0.304	0.3	0.293	0.297	0.303	0.294

Specifications Operating Range Comments

- Thermal data**
- 17 Thermal resistance housing-ambient 46 K/W
 - 18 Thermal resistance winding-housing 14 K/W
 - 19 Thermal time constant winding 5.38 s
 - 20 Thermal time constant motor 231 s
 - 21 Ambient temperature -20...+85°C
 - 22 Max. winding temperature +125°C
- Mechanical data (sleeve bearings)**
- 23 Max. speed 16 000 rpm
 - 24 Axial play 0.05 - 0.15 mm
 - 25 Radial play 0.014 mm
 - 26 Max. axial load (dynamic) 0.8 N
 - 27 Max. force for press fits (static) 15 N
 - 28 Max. radial load, 5 mm from flange 1.4 N



- **Continuous operation**
In observation of above listed thermal resistance (lines 17 and 18) the maximum permissible winding temperature will be reached during continuous operation at 25°C ambient.
= Thermal limit.
- Short term operation**
The motor may be briefly overloaded (recurring).
- **Assigned power rating**

Other specifications		Modular System		Details on catalog page 44	
29 Number of pole pairs	1	Gear		Motor Control	
30 Number of commutator segments	7	399_GP 13 K		532_ESCON Module 24/2	
31 Weight of motor	17 g	400_GP 13 A		532_ESCON 36/2 DC	

Values listed in the table are nominal.
Explanation of the figures on page 90.