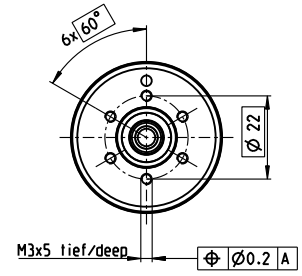
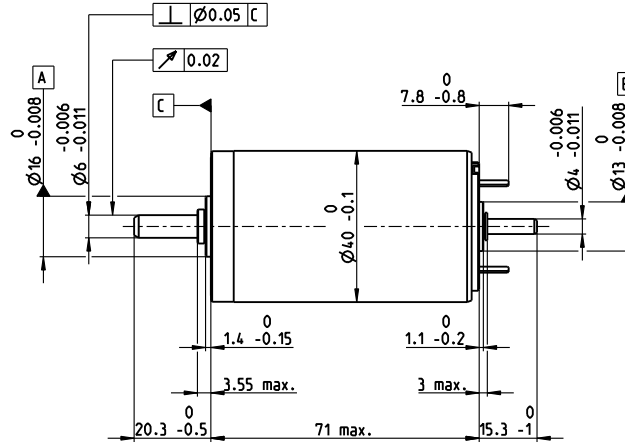
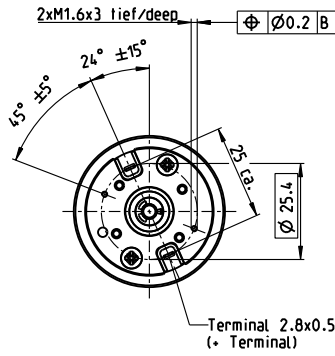


RE 40 $\varnothing 40$ mm, precious metal brushes, 25 watt

RE



M 1:2

- Stock program
- Standard program
- Special program (on request)

Part Numbers					
448588	448589	448590	448591	448592	

Motor Data (provisional)		448588	448589	448590	448591	448592
Values at nominal voltage						
1 Nominal voltage	V	9	18	24	42	48
2 No load speed	rpm	2850	2850	2780	2920	2690
3 No load current	mA	49.7	24.8	18.1	11	8.62
4 Nominal speed	rpm	2560	2580	2470	2640	2400
5 Nominal torque	mNm	87.8	87.8	88.2	87.6	87.6
6 Nominal current (max. continuous current)	A	2.96	1.48	1.09	0.65	0.524
7 Stall torque	mNm	873	956	794	895	818
8 Stall current	A	29	15.9	9.66	6.53	4.81
9 Max. efficiency	%	92	92	92	92	92
Characteristics						
10 Terminal resistance	Ω	0.311	1.14	2.49	6.43	9.97
11 Terminal inductance	mH	0.082	0.33	0.613	1.7	2.62
12 Torque constant	mNm/A	30.2	60.3	82.2	137	170
13 Speed constant	rpm/V	317	158	116	69.7	56.2
14 Speed/torque gradient	rpm/mNm	3.27	2.98	3.51	3.27	3.3
15 Mechanical time constant	ms	4.85	4.29	4.36	4.14	4.13
16 Rotor inertia	gcm ²	142	137	119	121	120

Specifications	Operating Range	Comments
Thermal data 17 Thermal resistance housing-ambient 4.65 K/W 18 Thermal resistance winding-housing 1.93 K/W 19 Thermal time constant winding 41.5 s 20 Thermal time constant motor 809 s 21 Ambient temperature -20...+85°C 22 Max. winding temperature +100°C Mechanical data (ball bearings) 23 Max. speed 3330 rpm 24 Axial play 0.05 - 0.15 mm 25 Radial play 0.025 mm 26 Max. axial load (dynamic) 5.6 N 27 Max. force for press fits (static) 110 N (static, shaft supported) 1200 N 28 Max. radial load, 5 mm from flange 28 N		<p>■ Continuous operation In observation of above listed thermal resistance (lines 17 and 18) the maximum permissible winding temperature will be reached during continuous operation at 25°C ambient. = Thermal limit.</p> <p> Short term operation The motor may be briefly overloaded (recurring).</p> <p>Assigned power rating</p>

Other specifications		Modular System		Details on catalog page 44	
29 Number of pole pairs	1				
30 Number of commutator segments	13				
31 Weight of motor	480 g				
Values listed in the table are nominal. Explanation of the figures on page 90.					
Option Preloaded ball bearings		Sensor 511_Encoder MR 256-1024 CPT 518_Encoder HEDS 5540 521_Encoder HEDL 5540		Motor Control 532_ESCON Module 24/2 532_ESCON 36/2 DC 533_ESCON Module 50/5 535_ESCON 50/5 541_EPOS4 Micro 24/5 542_EPOS4 Module 24/1.5 542_EPOS4 Module 50/5 543_EPOS4 Compact 24/5 3-axes 544_EPOS4 Compact 24/1.5 545_EPOS4 Compact 50/5 547_EPOS4 50/5	