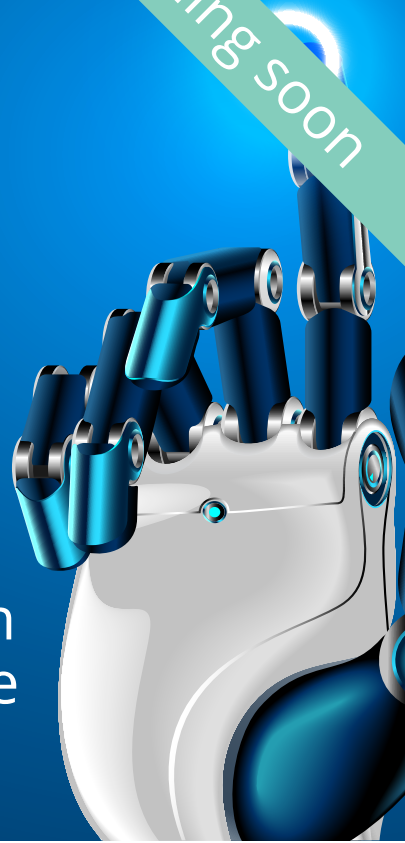
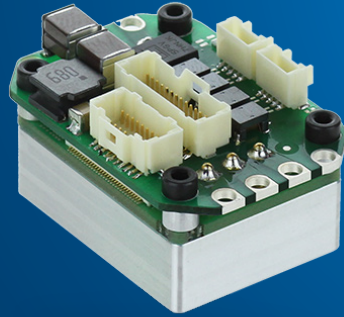


EVEREST XCR

ROBOTICS SERVO DRIVE



Powering the next generation
of robotics through disruptive
innovation

Everest XCR is an ultra-compact, super smart, high-powered servo drive. Due to its small size and rugged design it can be mounted virtually anywhere: collaborative robot joints, wearable robots, unmanned ground or aerial vehicles as well as inside motors. Everest also features the most advanced transistor technology in the world with the highest power density and efficiency while keeping negligible EMI and providing linear amplifier performance.

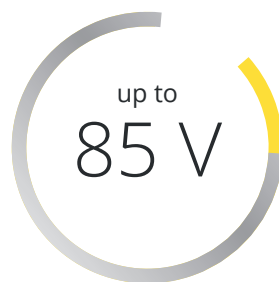
Weight **20 g**

Size in mm **29 x 42 x 21**

Up to **5 kW**



World's highest power
density smart servo drive



Wide voltage range for DC
bus or battery operation



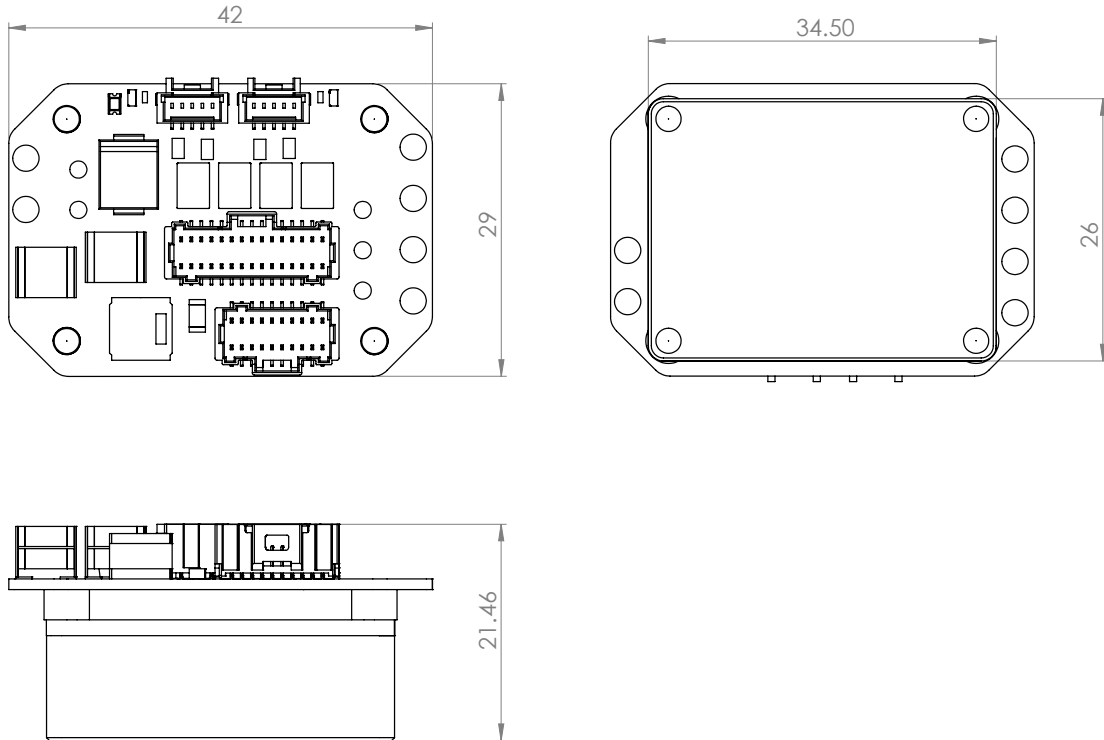
Low channel resistance for
highest efficiency

EVEREST

MOST VERSATILE SERVO DRIVE IN ITS CLASS

Everest is built on a shielded body construction which provides best-in-class heat dissipation and **ultra-low radiated emissions** and is packed with a whole lot of features for the most demanding applications.

DIMENSIONS



KEY FEATURES

Everest has been designed to provide the best performance for advanced robotics applications.

Absolute Serial **BiSS-C**

Incremental **Digital Hall** **Digital Encoder**

Servo Loops **Torque** **40 kHz** **Velocity** **20 kHz** **Position** **20 kHz**

Switching Frequency **8 kHz** **Configurable up to** **125 kHz**

Safety **STO SIL 3 PLe**

Network **EtherCAT** **CANopen**

Environment **-40 °C up to 110 °C** **Vibration IEC 60068-2-6** **Shock IEC 60068-2-27** **Alt. IEC 60068-2-13**

Current Resolution **0.10 mA** **16 bit with automatic gain scheduling** **1.44 mA**

IO **2x Digital Outputs** **4x Digital Inputs** **Motor Temperature**

